



INCREASED EFFICIENCY. HIGHER THROUGHPUT.
GREATER PRODUCTIVITY.

**AUTOMATED STORAGE +
RETRIEVAL SOLUTIONS**

 **RICHARDS ■ WILCOX, INC.**
A MEMBER OF THE  **DEXION®** GROUP

Richards-Wilcox, Inc. builds Automated Storage and Retrieval Systems with a unique blend of brains and brawn. Brawn to handle the tough jobs, brains to integrate with your operation.

Whether your choice is the High Cube II™ Vertical Lift Module, the HSR™ Horizontal Carousel, or the VSR® Vertical Carousel, Richards-Wilcox high density storage machines can increase the efficiency of your operation with higher throughput, greater productivity, and tremendous space savings.

All of our equipment has singularity of control, a singular control platform, providing seamless integration or expansion of systems while reducing your training costs for equipment upgrades.

Add Locator™, sophisticated inventory management software to integrate with WMS systems, and you have one of the smartest material handling systems on the market.

Richards-Wilcox is known for value-added engineering services that allow flexible design and unparalleled product support. Let us create a storage and retrieval system for you.

RICHARDS-WILCOX, INC.

THE SMART CHOICE FOR MATERIAL HANDLING



GS25F0084M

AVAILABLE ON
GSA CONTRACT
#GS-25F-0084M

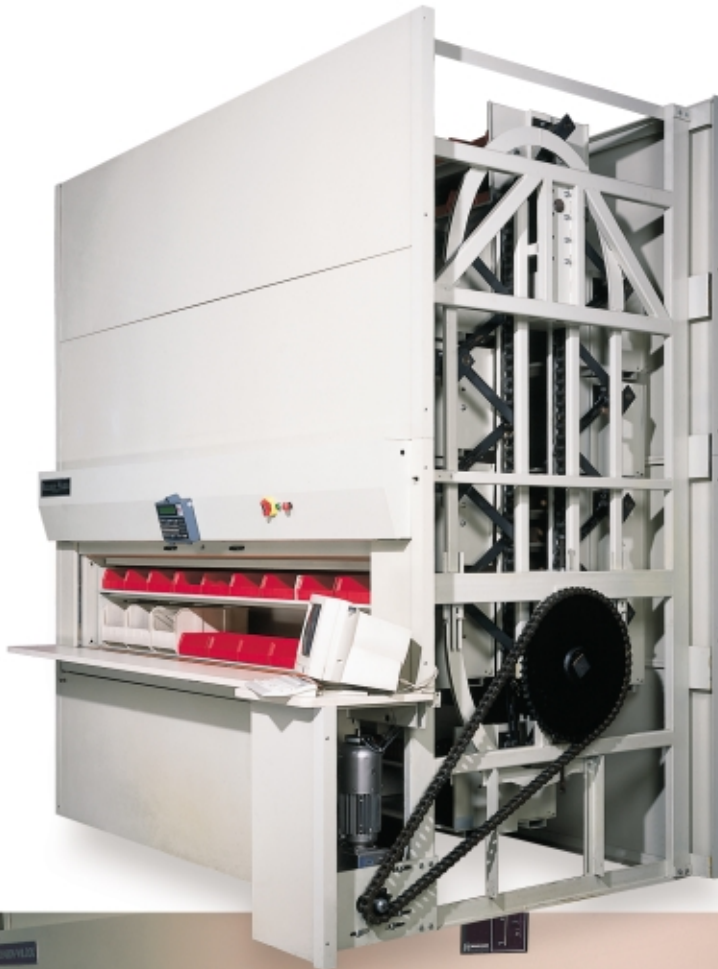
VERTICAL CAROUSEL – VSR®

Need a machine with a high carrier capacity?

Richards-Wilcox heavy-duty VSR vertical carousels are your answer. They consist of a series of shelves or carriers that rotate up or down, and position the desired product at a convenient ergonomic workstation on command. VSR's quick retrieval time saves labor costs.

VSR Benefits:

- Small Footprint Saves Space
 - 11 Feet by 5 Feet*
 - 11 Feet by 6 Feet*
- Heights: 9 Feet to 26 Feet
- Delivery Speeds: Up to 27 Feet per Minute
- Full Length Carriers: 18-Inch and 24-Inch Depths
- Load Capacities: 300 to 1,200 Pounds
- Safe and Easy to Operate
- Robust Design for High Capacity, Heavy Loads
- Enclosed with Removable Protective Panels
- Programmable Security Features
 - Restricted Access Control*
 - Keyboard Lockout*
 - Physical Lockdown*
- Reduction in Labor Costs
 - Saves Time, Prevents Costly Errors*
 - Product Brought to the Picker*
 - Pick-to-Light Display*
- Ergonomic Workstation
- Relocate Without Disassembly





GO
HIGH

HIGH CUBE II™

High Cube II Vertical Lift Module (VLM) is the smart choice to optimize space and increase productivity. The High Cube takes advantage of vertical space above the floor. The unit consists of two fully enclosed towers of stacked trays arranged

on shelves. Stored product remains stationary as a movable extractor platform automatically travels a center aisle. Simply enter a part number or location, and the High Cube II pulls a tray and delivers it to the operator at an ergonomically correct workstation. Tray return is automatic when you request another location.



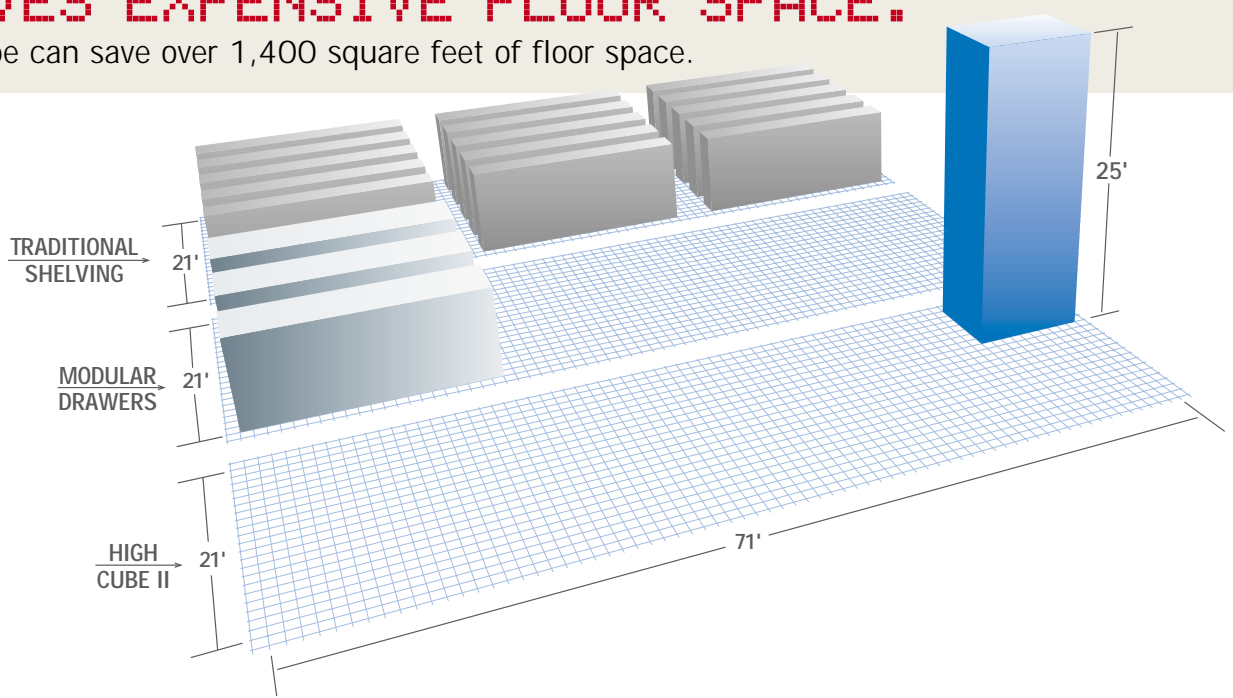
High Cube Benefits:

- Small Footprint Saves Space
70 Inches by 100 Inches for Largest Unit
- Storage Capacity: Up to 90,000 Pounds
- Heights: 12 Feet to 40 Feet
- Safe and Easy to Operate
- High System Reliability
- Programmable Security Features
*Restricted Access Control
Keyboard Lockout and Physical Lockdown*
- Reduction in Labor Costs
*Product Brought to the Picker
Saves Time, Prevents Costly Errors*

UP, NOT OUT!

CUBE SAVES EXPENSIVE FLOOR SPACE.

One High Cube can save over 1,400 square feet of floor space.



- Modular Unit Increases Flexibility
 - Enclosed with Removable Protective Panels*
 - Tray Levels can be Reconfigured at Any Time from 4 Inches to 36 Inches on 1-Inch Increments.*
- Ergonomic Workstation
- Multiple Workstations Available
- Pull-Out Workstation
- Pick-to-Light Display
- Tray sizes: 40 Inches to 56 Inches
- Tray Load Capacity to 550 Pounds
- Extractor Platform Vertical Speeds: Up to 180 Feet per Minute
- Tray Extraction Speeds: Up to 12 Feet per Minute
- Patented Full-Length Extraction Bar
- Modular System Expansion
- Low Maintenance
- Upgrade Package for Older Models
- Integrated Workstation Scale



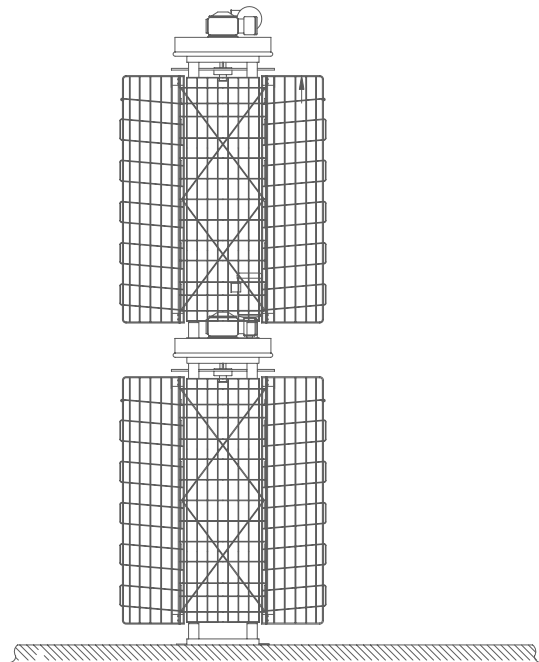
HORIZONTAL CAROUSEL - HSR™



Although the acronym HSR means Horizontal Storage and Retrieval, it might just as well stand for High Speed Retrieval. This machine features the industry's highest retrieval speed to decrease picking time and increase productivity. HSR can be double or triple stacked to optimize floor space.

HSR Benefits:

- Top Drive System Provides Strength and Stability
- Increases Productivity by Decreasing Picking Time
- Pick-to-Light Tree for Accurate Retrieval
- Reduces Labor Costs
- Easy Operation
- Low Maintenance
- Double or Triple Stack Units to Save Space
- Group Multiple Machines to Create Single Operator Work Pods
- Delivery Speeds Up to 110 Feet per Minute
- Overall Length: From 20 Feet to Over 141 Feet
- Carrier Load Capacities: 800 Pounds and 1,500 Pounds
- Carrier Heights: 6 Feet to 12 Feet
- Carrier Widths: 15 Inches to 38 Inches
- Carrier Depths: 12, 18, and 22 Inches



SINGULARITY OF CONTROL

Whether your choice is the Richards-Wilcox High Cube, VSR, or HSR, or any combination thereof, all of our machines have singularity of control.

This singular control platform provides seamless integration or expansion of systems, years of trouble-free operation, and reduction of training costs for equipment upgrades.

Controls Package Includes:

- Modular Control System and Drive
 - Displays Sensor Status*
- Control Built with Standard Commercial Parts
- PC Style Keyboard Interface
 - Menu Driven Functions*
 - Retrieve by Part Number*
 - Interface to Control Security*
- Context Sensitive Help Screen with Easy to Use Diagnostics Display
 - Multiple Indicators for Switches and Sensors*
 - Displays Machine Status*
 - Helps Resolve Errors*
 - Provides Manual Motor Control*
- "Smart" System Learns Machine Configuration
- Host and Peripheral Interface
- Location Locking
- Built-in Parts Database

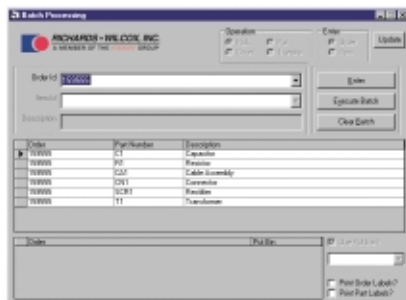


- Automated Pick List and Kitting Queues
- Store and Retrieve By
 - Carrier/Shelf*
 - Drawer/Bin*
 - Part Number*

Options:

- Host Interface
- Electronic Pick-and-Put Displays
- Peripheral Interfaces
 - Displays, Scanners, Scales, Printers*
- Multiple Workstation Support

LOCATOR™ SOFTWARE



Want to increase handling efficiencies even more? Locator software can increase machine throughput and reduce operator error. User configurable for High Cube, HSR, and VSR.

- Allows Control of Multiple Machines with Just One Computer
- Manages Work Orders
- Inventory Tracking
- Host Order Processing and Batching
- PC-Based and/or Main Server-Based
- Supports Displays, Scanners, Scales, Printers
- MS Windows 95, 98, 2000, NT, XP



600 South Lake Street
Aurora, Illinois 60506

TOLL FREE 800.253.5668

TEL 630.897.6951

FAX 630.897.6994

www.rwasrs.com